

峨眉二中21届高二下四月月考物理科答题卡

考号：_____ 姓名：_____ 班级：_____

注意事项

1. 答题前请将姓名、班级、考场、座号和准考证号填写清楚。
2. 客观题答题,必须使用2B铅笔填涂,修改时用橡皮擦干净。
3. 主观题必须使用黑色签字笔书写。
4. 必须在题号对应的答题区域内作答,超出答题区域书写无效。
5. 保持答卷清洁完整。

贴条形码区

正确填涂 缺考标记

一.单选题(36分)

- 1 [A] [B] [C] [D] 4 [A] [B] [C] [D] 7 [A] [B] [C] [D] 10 [A] [B] [C] [D]
 2 [A] [B] [C] [D] 5 [A] [B] [C] [D] 8 [A] [B] [C] [D] 11 [A] [B] [C] [D]
 3 [A] [B] [C] [D] 6 [A] [B] [C] [D] 9 [A] [B] [C] [D] 12 [A] [B] [C] [D]

二.多选题(16分)

- 13 [A] [B] [C] [D] 14 [A] [B] [C] [D] 15 [A] [B] [C] [D] 16 [A] [B] [C] [D]

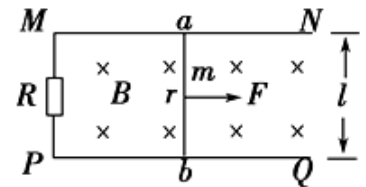
三.填空题(16分)

17 (1) _____ (2) _____ (3) _____

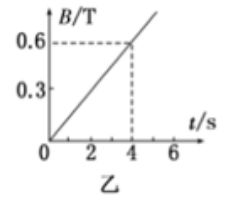
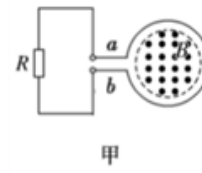
18 (1) _____ (2) _____ (3) _____

四.计算题

19 (12分)



20 (15分)



21 (15分)

